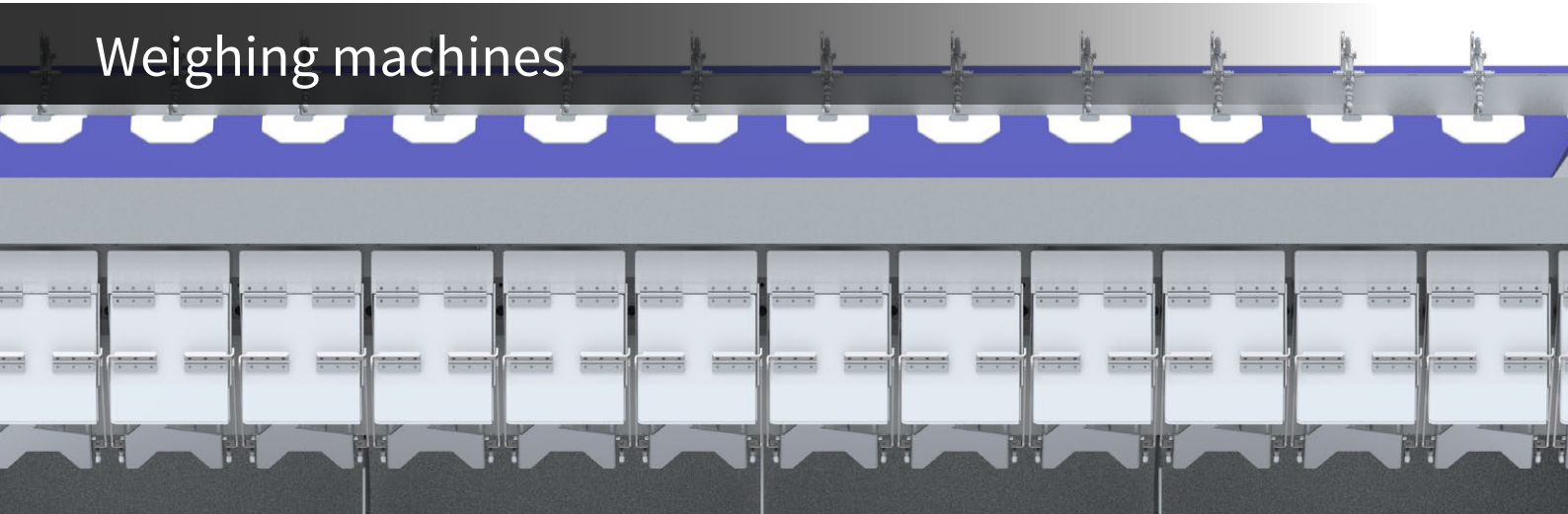
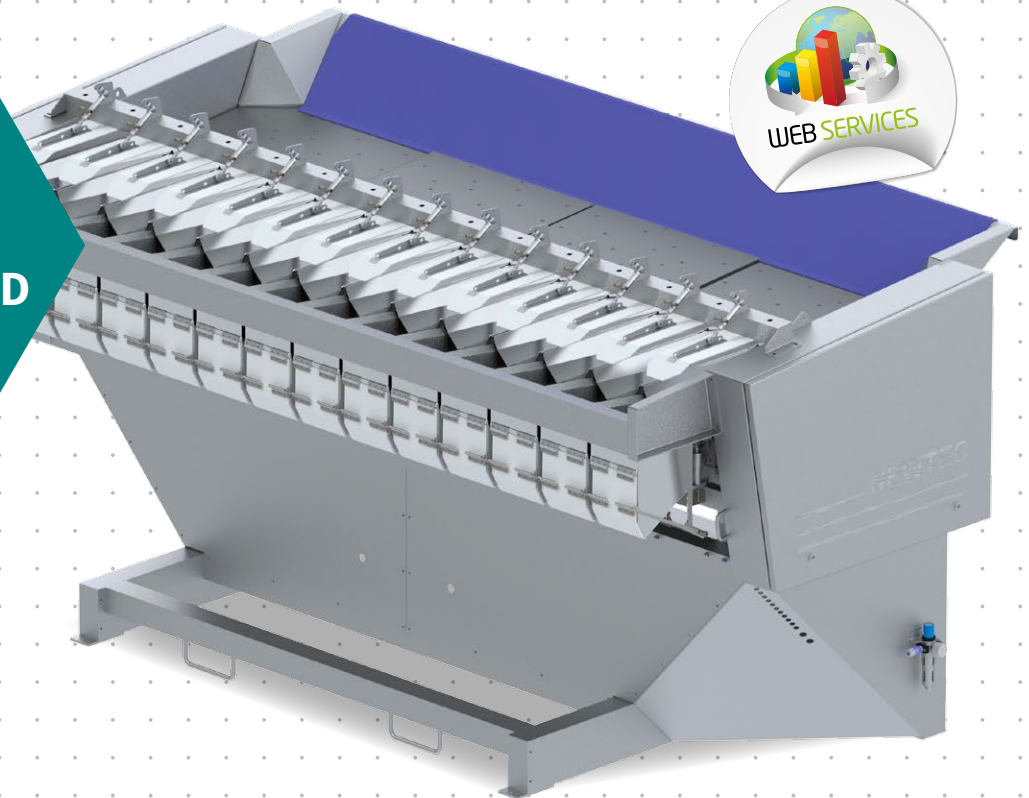


Weighing machines



**HIGH
CAPACITY
FOR LARGE
PRODUCTS AND
PORTIONS**



NEWTEC WEIGHING MACHINE **4014XB1**

Application: Large products such as:

- Potatoes
- Carrots
- Onions
- Citrus
- Similar fruits and vegetables

Advantages:

- High weighing accuracy: Typical giveaway: less than 0.2%
- High speed – up to 22 portions/min. at 25 kg
- Large weigh heads for large products and portions
- WebServices enabled for remote servicing and for capturing production data
- MachineLink enabled - from only one touchscreen, either on our Weighing Machine or Check Point, recipe change and start/stop for both machines is possible

Weighing machines

NEWTEC WEIGHING MACHINE 4014XB1

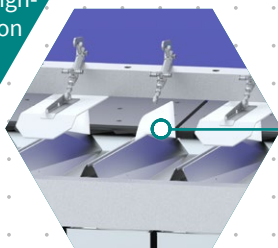
LARGE WEIGH HEADS

W: 160 mm
D: 220 mm

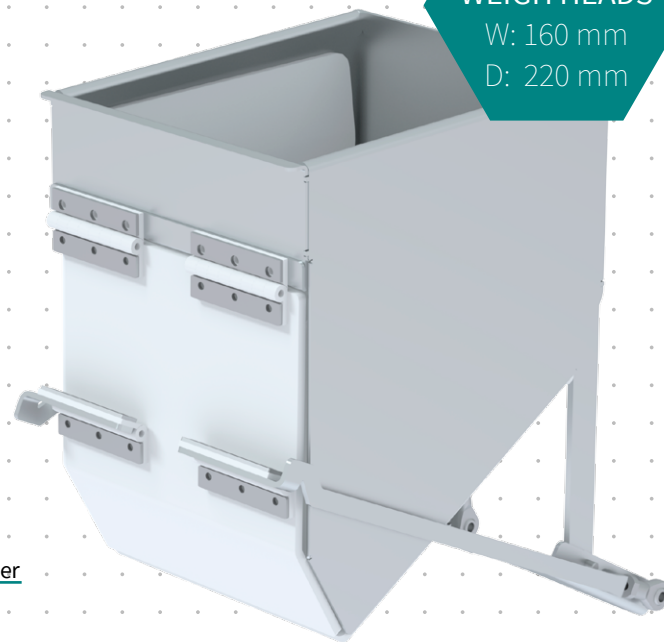
Option for carrots



Model 4014XB1
for carrots with special feature for optimal alignment and distribution of the carrots



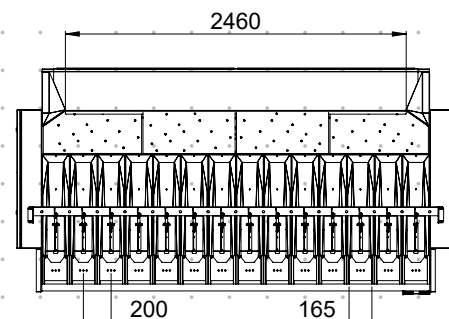
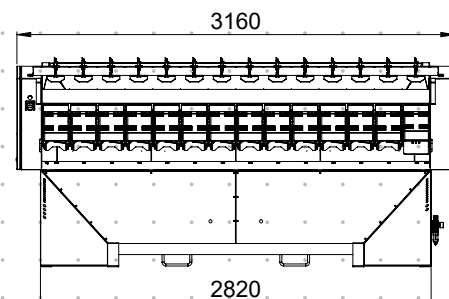
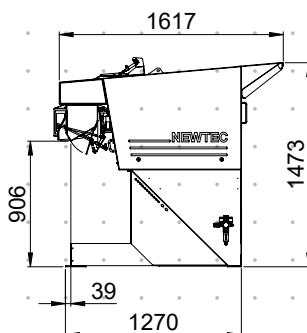
Carrot divider



Newtec software

- Intuitive user interface
- Informative and upgradable
- Same user interface on all Newtec weighing and packing machines

Capacity	1 kg	2.5 kg	5 kg	10 kg	25 kg
Portions per min. up to:	85	85	60	50	22



Weighing Machine with 14 channels

Speed: High speed – up to 22 portions/min. at 25 kg
Capacity: 1-25 kg (depending on product)
Weigh pan volume: 6 L
Material: According to the EU rules on food contact materials
Protection class: IP54

Air requirement:

Connection: 3/8"
 Min. pressure: 6 bar (0.6 Mpa)
 Consumption: 100 NL/min.

Electrical requirement: 3x230 VAC or 3x400 VAC (N) PE 50/60 Hz 3-6 kW

Environment: 5°C – 40 °C

Weight: 900 kg (excl. portion collection system)