

Specifications

Wrapping

Package size Width: 80-350 mm (3.1-13.8 inches)
 Height: 10-130 mm (0.4-5.1 inches)
 Depth: 80-230 mm (3.1-9.0 inches)
 The combination of maximum size of each dimensions cannot be used. Maximum size of the package that can be wrapped also depends on the film to use.

Wrapping speed Max. 17 packages/min.
 Number of film roll One roll
 Film width 350-500 mm (13.8-19.7 inches)

Weighing

Interval type	Multi-interval	Single interval
Capacity	Max. 6/15kg	Max. 3/6kg
Scale interval	e=2/5g	e=1/2g
Weighing range	40g-15kg	20g-6kg
Max. wrapping capacity	5kg	5kg
		11 lb

Thermal printer

Label type	Die-cut label	Linerless label
Label width	25-80mm/ 0.98-3.1 inches	44-59mm/ 1.73-2.3 inches
Label length	20-150mm/ 0.79-5.9 inches	20-500mm/ 0.79-19.7 inches *
		* Maximum printing length is 300mm/ 11.8 inches
Dot density	12 dot/mm (300dpi)	

Operation console

Display panel TFT LCD color (12.1 inches) touch panel
 Operation keys Mechanical keys and touch screen
 Memory for programmable files .. 8.8GB

General

Power source and power consumption • 208/240V; 3Ø; 50/60Hz; 2.3kVA
 • 220-240V; 1Ø; 50/60Hz; 7.5A; 1.8kW
 Net weight Approx. 250kg
 Operation humidity 90%RH (max.) with no condensation

Options

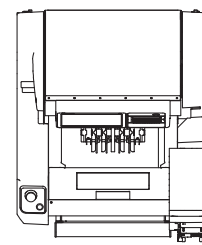
- Second Labeler



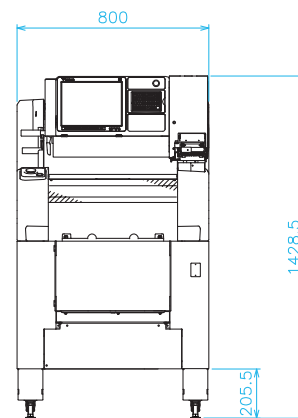
*Specifications are subject to change without prior notice.

Dimensions

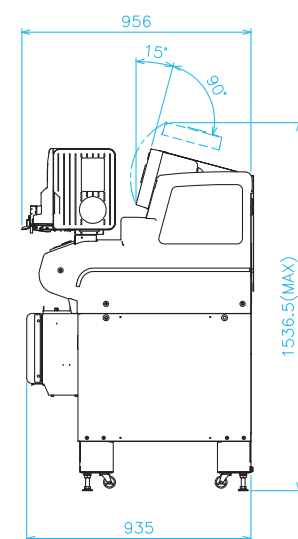
Top View



Front View



Side View



Unit = mm

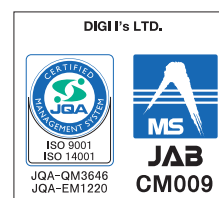


AW-5600FX

Integrated semi-automatic weigh-wrap-label system
 Flexible, versatile and reliable partner



TERAOKA SEIKO CO., LTD.
 13-12 Kugahara 5-chome, Ohta-ku,
 Tokyo 146-8580 JAPAN
 www.digisystem.com



A1501CDMP

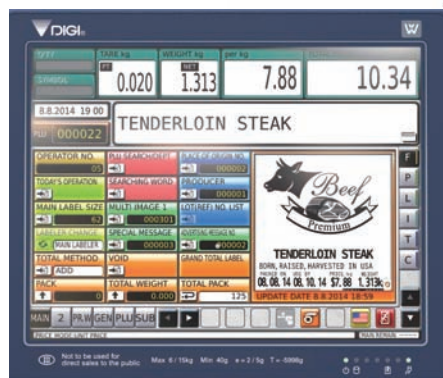
Searching for a New Balance

Enhanced Pick-Pack system strongly supports complex wrapping needs

The AW-5600FX introduces an enhanced Pick-Pack system. More powerful air supply, widened impulse heating system and a new object detect sensor make the superior wrapping finish even better.



AW-5600FX LL



Small foot print

Only a small foot print of 800mm x 935mm (31.5-36.8 inches) is needed for installation.

User friendly extra-large 12.1" full color touch screen

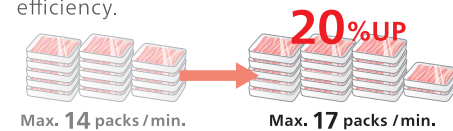
Label print content can be previewed on the display, helping to prevent labeling errors. PLU and frequently used function keys can be assigned for easy access. Size, color and location can be changed to suit your operation. Extremely large memory easily supports an increasing need for print items.

Flexible wrapping capability

Not limited to normal trays, the AW-5600FX is also capable of wrapping fragile or irregular shaped trays, or even products without trays. The AW-5600FX will drastically reduce the need for a cumbersome hand wrapping operation.

AW-5600FX wraps even faster

The AW-5600FX processes 17 packs per minute (max.). This 20%+ improvement in processing speed helps increase operation efficiency.



Improved sealing

Temperature control feature for film sealing is included. Unique impulse heater is wider for better sealing. Compressed air supply is doubled compared to the previous DIGI models.

Easy film change

Film loading can be done from the front of the machine very easily, minimizing operation downtime.

Energy saving 50%

The AW-5600FX operates with 50% less energy compared to previous DIGI models.

Easy maintenance

Parts that touch the product, such as the elevator head and weighing platter, can be accessed easily and quickly detached to wash down. It helps maintain hygienic work conditions.



Featuring linerless labeling

A new dimension for backroom operations. Eliminate liner waste and increase flexibility and profits.



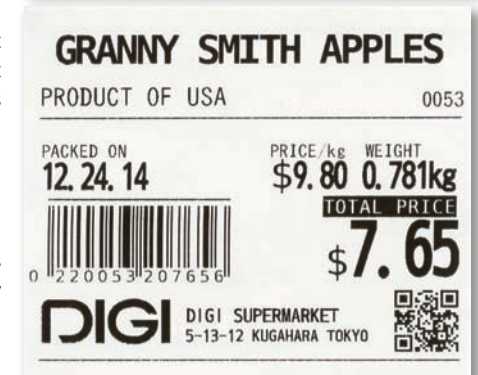
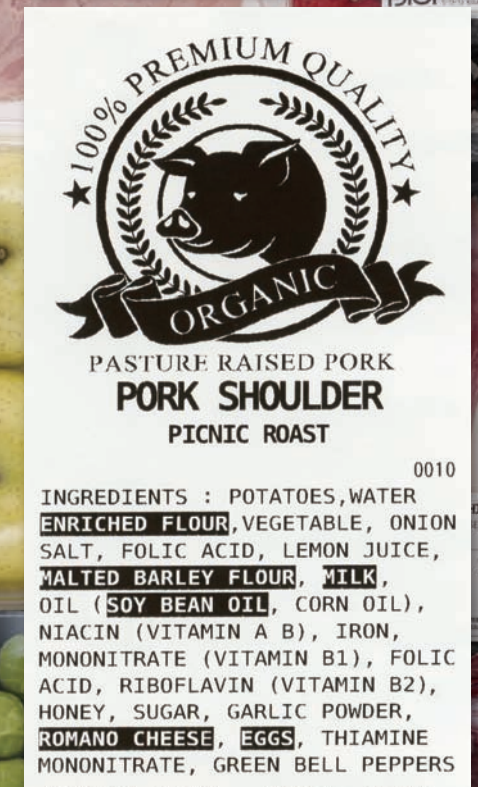
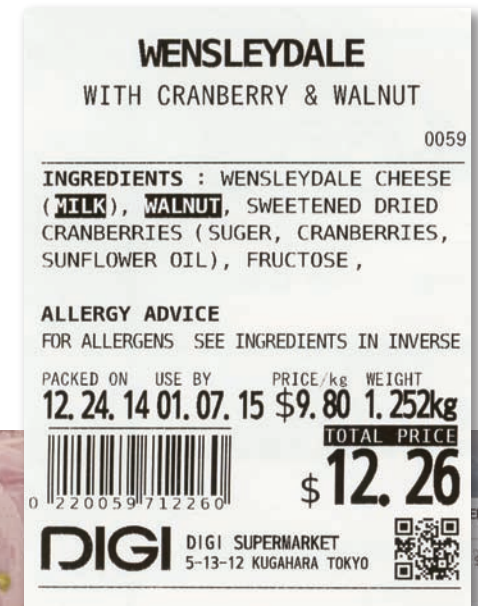
ex. 86mm ▶ 60mm

Label format flexibility

A continuous strip of linerless labels is cut every time a label is printed. The auto-cut feature allows variable label layouts and sizes to be used from one roll of linerless labels.

No more wasted white space on big labels

The auto-label-sizing feature eliminates unused space on the label and automatically adjusts the label size. This reduces the label cost and makes labels more attractive.



Actual size