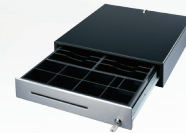


Cash Drawers



FEC provides a line of POS Cash Drawers to compliment FEC's line of POS terminals. Customers can choose between the larger C-420A model with steel and plastic construction and the slightly smaller C-430A model that features ABS plastic construction with a stainless steel front panel. Both models weigh nine kilograms and are available in white or black.



Model	C-420A	C-430A
Dimensions (W x D x H)	420 x 440 x 105 mm	425 x 425 x 90 mm
Weight	9.0 kg	9.0 kg
Construction	Steel Construction with Plastic Front Bezel	Steel Construction with Stainless Front Panel
Housing Color	Pearl White (Standard) Black or Other OEM Colors Available	
Casing	Metal	
Dividers	Bill Tray: Adjustable 4 to 5 Compartments Coin Tray: Adjustable up to 9 Compartments Spring Loaded Bill Clips and detachable Coin Tray	
Drawer Construction	Heavy Duty Metal Drawer with Keylock	
Slip Deposit Slot	Front Access Slot for Checks, Credit Cards, Paper 16mm Space Below Coin Tray Provides Room for the Slips	
Electrical Solenoid	12V, 24V	
EMI	CE	
Security		
Solenoid	Open by Drive Signal to the Solenoid	
Lock	Mechanically Locks the Drawer	
Manual	Open By Key	
I/O Interface		
Standard	2-pin, 6-pin (EPSON Printer Compatible), RS-232, USB	