

CITIZEN

Micro HumanTech

Deep impact High speed impact printers from Citizen. Reliable and durable.



Standard type

Logic Seeking Control
The logic seeking control allows impact printing at high speed. Automatic printing from left to right or right to left. Whatever is faster.

Easy Paper Loading
Easy paper loading makes impact printing as simple as can be.

Internal Power Supply
The CD-S500 series comes with a detachable internal power supply.

CD-S500/501/503

POS

Applications

- Receipt
- Journal
- Ticket
- Daily report
- Kitchen
- Delivery slip
- Weight scales



Easy paper loading



Vertical solution
CD-S501



Available in black
CD-S501S

CITIZEN

Micro HumanTech

Options

Wall mount Kit

Wall-CTS300



Interface card

Parallel (950035-00)



Interface cards



Serial (950034-00)



USB (950036-00)

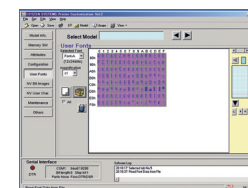
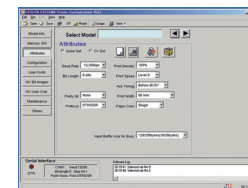
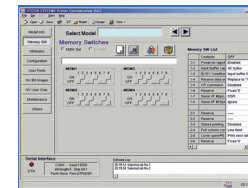
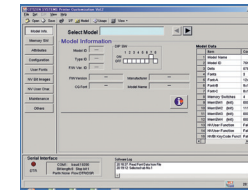


Ethernet (950053-00)

Specifications

Printing method	Serial dot impact (Logic-seeking control)
Printing direction	Bi-directional
Font	Font A: 7 x 9, 9 x 9 matrix
Number of columns	76.2mm paper: Font A-40/42 columns / Font B-33/35 columns 69.5mm paper: Font A-36/30 columns / Font B-38/31 columns (69.5mm paper width) 57.5mm paper: Font A-30/25 columns / Font B-31/26 columns (57.5mm paper width)
Printing speed	5.0 lines/sec at 76.2mm width+40 columns 5.4 lines/sec at 69.5mm width+36 columns 6.0 lines/sec at 57.5mm width+30 columns
Character size (WxH)	Font A: 1.25 x 3.12mm (7 x 9 dots) / Font B: 1.57 x 3.12mm (9 x 9 dots)
Character set	Alphanumeric, International, Code page 437, 850, 860, 863, 865, 852, 866, 857, 858, WPC1252
Line spacing	4.23mm
Line feed speed	40 lines/sec
Paper feed method	Friction
Paper	76.2/69.5/57.5±0.5mm x ø83mm Thickness: 0.06-0.085mm (1Ply) 1Ply/2Ply/3Ply copy paper 0.05 – 0.14mm (Copy paper cut) 0.05 – 0.20mm (Copy paper print)
Interface	Parallel (IEEE1284), Serial (RS-232C), USB
Input buffer	4K/40 bytes
NV bit map data area	128K bytes
Drawer kick-out	2 drawers
Ink ribbon cartridge	Two colors (Red and Black), Single color (Black)
Power supply	DC24V±7%
AC adapter	Input: AC 100-230V,1.3A Output: DC24V±5%
Weight	Approx. 2.9kg (Standard type) 3.2kg (With auto cutter/winder type)
Dimensions (W x D x H)	156x247.7x174.4mm (Standard type / with auto cutter) 156x277.7x197.8mm (Winder type)
Operating environment	0~50°C, 10 - 90% RH
Storage environment	-20~70°C, 5 - 90% RH
Reliability	Printer: MCBF 7.5 million lines / Print Head: 150 million characters / Auto cutter: 1,000,000 cuts
EMC and safety standards	UL, C-UL, FCC Class A, TUV, GS, CE marking, CCC

Customization Software



Features



- 5.0 lines/sec high-speed printing
- 76.2/69.5/57.5mm selectable paper width
- Easy paper loading
- Cutter (full/partial)
- Logic-seeking control
- Optional interface cards
- Built-in AC adapter
- Black mark function (option)
- Cash drawer kick-out
- Memory switch function
- Build-in buzzer
- Bitmap data registration (NV memory)
- ESC/POS compatibility
- Page mode
- Two color printing
- 3 PLY paper printing capability
- Easy customization by software
- Available in white or black
- High reliability and durability
- Driver: Win 2000/XP/VISTA/2003 Server, OPOS 1.8, CUPS

Type Classification
CD-S500 S RS E WH M1
1) 2) 3) 4) 5) 6)

1) Model type

CD-S500: Standard type
CD-S501: Built-in auto cutter type
CD-S503: Built-in auto cutter and winder type

2) Power source

S: Built-in AC adapter type

3) Interface

PA: Parallel (IEEE1284)
RS: Serial (RS-232C)
UB: USB

4) Region (Characters +power cord)

E: Europe
U: USA

5) Case color

WH: Cool white
BK: Black

6) Black mark sensor

None: No sensor / M1: Left sensor for paper back / M2: Right sensor for paper back / M3: Left sensor for paper front / M4: Right sensor for paper front